

Mega Pixel Digital CCD Camera

INTELLIGENT EYE

□ Lens Distortion Correction Camera

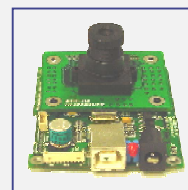
- ❖ **Model : IE-LDC130** (1.3Mega Pixels), **IE-LDC200** (2.0Mega Pixels)
IE-LDC300 (3.0Mega Pixels), **IE-LDC500** (5.0Mega Pixels)

➤ Feature

- Lens Distortion Correction Camera
 - Real time processing (Enable Embedded)
 - + or – direction distortion correction
 - Fixed or User controllable correction factors

➤ Option

- Embedded Image processing software module(On Demand)
- Case
 - Materials : Aluminum working, etc
 - Color : 2 Colors (Black, Silver)
- Lens mount : C/CS
- S/W (IeScope) – Analyzing Image Tool (Exclusive Use)



❖ S/W

- Device Driver, DLL for Twain32, S/W SDK (VC++)

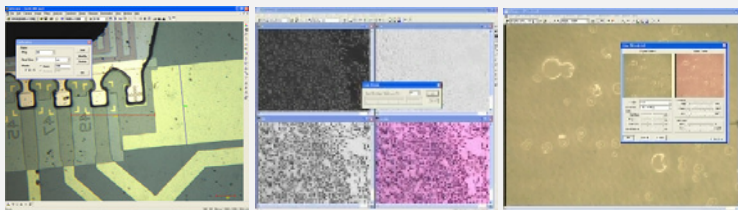
❖ Specification

Item	IE-LDC130	IE-LDC200
Pixels	1.3 Mega Pixels	2.0 Mega Pixels
Image sensor	1/2" format, CMOS, Color	1/2" format, CMOS, Color
Scan Type	Progressive	Progressive
Frames (8 Bit)	1280*1024 : 11 fps, 1024*768 : 18 fps 800*600 : 28 fps, 640*480 : 40 fps Sub sampled	1600*1200 : 8 fps 1280*1024 : 11 fps, 1024*768 : 18 fps 800*600 : 28 fps, 640*480 : 40 fps Sub sampled
Effective Pixels	1280 * 1024, 5.2 μ m square pixels	1600 * 1200, 4.2 μ m square pixels
Sensitivity	High (1.8V/Lux-sec(550nm))	Moderate (1.2V/Lux-sec(550nm))
Exposure	Auto/Manual	Auto/Manual
White Balance	Auto/Manual	Auto/Manual
Memory	64M	64M
Interface	USB 2.0/USB 1.1	USB 2.0/USB 1.1
Power	USB bus power	USB bus power
Dimensions	80*60*40(w*h*d) mm, 240g	80*60*40(w*h*d) mm , 240g

Mega Pixel Digital CCD Camera INTELLIGENT EYE

❑ IeScope – Application Program

❖ Application for IntelligentEye : IeScope V1.0



- Expert Imaging Tool
- Camera View and Capture
- Saving Image File : Support BMP,JPG format
- Gain Control, AWB(Auto White Balance), AE (Auto Exposure).
- Channel Split : RGB, HSI,CMYK,YIQ.
- Gamma Correction.
- Color Adjustment : RGB Intensity, Gray Scale etc.
- Ruler Calibration And Object measuring
- Zoom In/Zoom Out, Sizing, Etc. Functions

❖ Support Twain32

- Camera View and Capture
- Gain Control, AWB(Auto White Balance), AE (Auto Exposure).
- Compatible Applications
 - : MS-Office, Adobe Photo Shop, Other Imaging Tools, etc...

➤ Requirements

- ✓ H/W : Pentium II 233 , 128M Memory, 100M HDD, USB(1.1 or 2.0) Port, 24Bit Color
- ✓ O/S : MS Windows 98, Windows 2000, Windows XP, Windows2003

▪ Company : Softronics Co.,Ltd.

- TEL : 82 - 042 – 866 – 6575
 - FAX : 82 - 042 – 866 - 6574
 - Address : #RM T212/217, VBI Center , ICU, 103-6
 Munji-dong, Yuseong-gu, Daejeon-si, Korea

➤ Web : <http://www.softronics.co.kr>
 ➤ e-mail : softronics@softronics.co.kr